

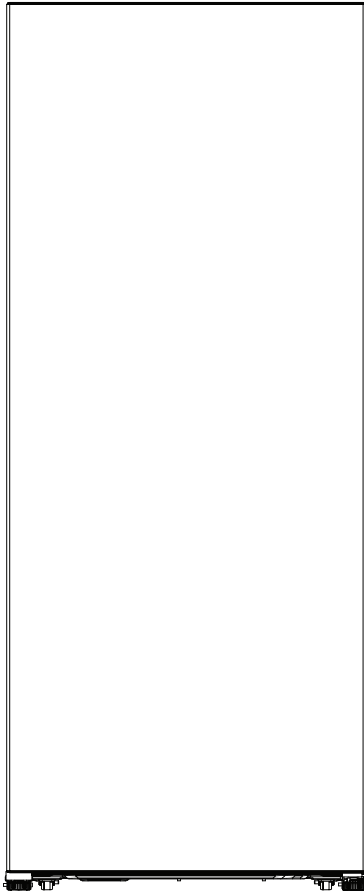


CONVERTIBLE FREEZER/REFRIGERATOR

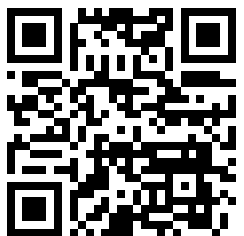
INSTRUCTION MANUAL

CATALOG NUMBER

**CCUC1110GW, CCUC1110GB, CCUC1110GS,
CCUC1640GW, CCUC1640GB, CCUC1640GS**



PRODUCT REGISTRATION



**ACTIVATE
WARRANTY**

Thank you for purchasing our Commercial Cool product. This easy-to-use manual will guide you in getting the best use of your freezer.

Remember to record the model and serial numbers. They are on a label on the back of the product.

Staple your receipt to your manual. You will need it to obtain warranty service.

Model number

Serial number

Date of purchase

SAFETY INFORMATION

DANGER

DANGER - Immediate hazards which **WILL** result in severe personal injury or death

WARNING

WARNING - Hazards or unsafe practices which **COULD** result in severe personal injury or death

CAUTION

CAUTION - Hazards or unsafe practices which **COULD** result in minor personal injury

IMPORTANT SAFETY INSTRUCTIONS

WARNING

When using electrical appliances, basic safety precautions should be followed, including the following:

READ ALL INSTRUCTIONS BEFORE USING THE UNIT

NOTE: If the freezer has been placed in a horizontal or tilted position for any period of time, wait 24 hours before plugging the unit in.

1. Use this appliance only for its intended purpose as described in this use and care guide.
2. This freezer must be properly installed in accordance with the installation instructions before it is used. See grounding instructions in the installation section.
3. Never unplug freezer by pulling on the power cord. Always grasp the plug firmly and pull straight out from the outlet.
4. Do not operate any appliance with a damaged cord or plug. Return appliance to the nearest authorized service facility for examination, repair or adjustment.
5. Unplug freezer before cleaning or before making any repairs.

Note: If for any reason this product requires service, we strongly recommend that a certified technician performs the service. Component parts shall be replaced with like components and servicing shall be done by factory authorized service personnel, so as to minimize the risk of possible ignition due to incorrect parts or improper service.
6. Do not use any electrical device or any sharp instrument in defrosting the freezer.
7. After the freezer is in operation, do not touch the cold surfaces in the freezer compartment, particularly when hands are damp or wet. Skin may adhere to these extremely cold surfaces.
8. Do not refreeze foods that have been thawed completely. The United States Department of Agriculture in Home and Garden Bulletin No. 69 reads: "...You may safely refreeze frozen foods that have thawed if they still contain ice crystals or if they are still cold-below 40°F.

"...Thawed ground meats, poultry, or fish that have any off-odor or off-color should not be refrozen and should not be eaten. Thawed ice cream should be discarded. If the odor or color of any food is poor or questionable, discard it. The food may be dangerous to eat ... Even partial thawing and re-freezing reduce the eating quality of foods, particularly fruits, vegetables, and prepared foods. The eating quality of red meats is affected less than that of many other foods. Use refrozen foods as soon as possible, to save as much of its eating quality as you can."

SAFETY INFORMATION

9. This freezer should not be recessed or built-in in an enclosed cabinet. It is designed for freestanding installation only.
10. Do not operate freezer in the presence of explosive fumes.
11. This appliance is not intended for use by persons (including children) with reduced physical, sensory or mental capabilities, or lack of experience and knowledge, unless they have been given supervision or instruction concerning use of the appliance by a person responsible for their safety.
12. Children should be supervised to ensure that they do not play with the appliance.
13. Do not use extension cords or ungrounded (two prong) adapters;
14. If the supply cord is damaged, it must be replaced by the manufacturer, its service agent or similar qualified person in order to avoid hazard.
15. Do not store explosive substances such as aerosol cans with a flammable propellant in this appliance.

⚠ WARNING: Keep ventilation openings, in the appliance enclosure or in the built-in structure, clear of obstruction.

⚠ WARNING: Do not damage the refrigerant circuit.

⚠ WARNING: Do not use electrical appliances inside the food storage compartments of the appliance, unless they are of the type recommended by the manufacturer.

SAVE THESE INSTRUCTIONS HOUSEHOLD USE ONLY

⚠ DANGER

Risk of child entrapment. Before disposing of any freezer or refrigerator, remove door(s). Leave any shelves in place so that children may not easily climb inside.

REFRIGERANT



GAS WARNINGS

⚠ DANGER - Risk of fire or explosion. Flammable refrigerant used. DO NOT use mechanical devices to defrost freezer. DO NOT puncture refrigerant tubing.

⚠ DANGER - Risk of fire or explosion. Flammable refrigerant used. To be repaired only by trained service personnel. DO NOT puncture refrigerant tubing.

⚠ CAUTION - Risk of fire or explosion. Flammable refrigerant used. Consult repair manual/owner's guide before attempting to service this product. All safety precautions must be followed.

⚠ CAUTION - Risk of fire or explosion. Dispose of property in accordance with federal or local regulations. Flammable refrigerant used.

⚠ CAUTION - Risk of fire or explosion due to puncture of refrigerant tubing; Follow handling instructions carefully. Flammable refrigerant used.

SAFETY INFORMATION

GROUNDING INSTRUCTIONS

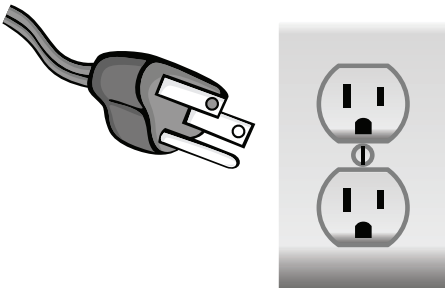
ELECTRICAL REQUIREMENTS

In the event of malfunction or breakdown, grounding provides a path of least resistance for electric current to reduce the risk of electric shock. The appliance must be connected to a cord having an equipment-grounding conductor and a grounding plug. The plug must be plugged into an appropriate outlet that is properly installed and grounded in accordance with all local codes and ordinances.

⚠ DANGER - Improper connection of the equipment grounding conductor can result in a risk of electric shock. The conductor with insulation having an outer surface that is green with or without yellow stripes is the equipment grounding conductor. If repair or replacement of the cord or plug is necessary, do not connect the equipment-grounding conductor to a live terminal. Check with a qualified electrician or service person if the grounding instructions are not completely understood, or if in doubt as to whether the appliance is properly grounded. Do not modify the plug connected to the appliance - if it will not fit the outlet, have a proper outlet installed by a qualified electrician.

FOR GROUNDED, CORD-CONNECTED APPLIANCE RATED LESS THAN 15A AND INTENDED FOR USE ON A NOMINAL 120V SUPPLY CIRCUIT

The appliance is for use on a nominal 120V circuit and should be connected to a grounding outlet that looks like the one illustrated below. The use of a temporary adaptor is not recommended.



SET UP & USE

POWER SUPPLY CORD

1. Avoid the use of an extension cord because of potential safety hazards under certain conditions. Have a qualified electrician or serviceman to install an outlet near the appliance.
2. If it is absolutely necessary to use an extension cord, extreme care must be exercised.

USE OF EXTENSION CORDS WITH FREEZERS

Only use a grounded extension cord that is rated at least 15 amps and has a third-wire ground. When a long extension cord is used to connect the freezer, a voltage drop occurs. The longer the cord, the greater the voltage drop. This results in less voltage being supplied to the freezer and increases the amount of current (amp) draw or reduces performance. A heavier cord with a larger wire size will reduce the voltage drop. Be sure to choose a cord that will supply enough voltage to operate the freezer. The table below indicates appropriate gauge for extension cords.

Minimum Gauge for Cord Sets						
Ampere Rating		Volts	Total Length of Cord in Feet (meters)			
		120V	25(7.6)	50(15.2)	100(30.5)	150(45.7)
		240V	50(15.2)	100(30.5)	200(61.0)	300(91.4)
More Than	Not More Than	AWG				
0	6		18	16	16	14
6	10		18	16	14	12
10	12		16	16	14	12
12	16		14	12	Not Recommended	

⚠ WARNING: Keep electrical cords in good condition. Do not use worn, bare, or frayed cords because they can cause electrical shock.

⚠ WARNING: Operating equipment at low voltage can cause it to overheat. Using an excessively long extension cord can cause the cord to overheat.

NOTE: Neither W Appliance Co. nor the dealer can accept any liability for damage to the product or personal injury resulting from failure to observe the electrical connection procedures.

SET UP & USE

INSTALLATION GUIDE

1. Unpack your freezer by removing all packaging materials like carton, base, foams, adhesive tape, etc.
2. Remove all accessories, internal packaging material used to hold shelves, ice tray, etc. in place.
3. Clean the remains of all adhesive tape used and remove all printed material supplied.
4. Install the freezer in a convenient location away from extreme heat and cold. Allow sufficient clearance between the freezer and side wall so the door(s) will open without obstruction. Freezer is not designed for recessed installation.
5. The floor on which the freezer should be placed must be flat, hard, solid, and even. The freezer should not be placed on any soft material such as foam, plastic, carpeting, etc.
6. The following are recommended minimum clearances around the freezer for proper air circulation:
Sides: 5" (127mm)
Top : 2" (50mm)
Back : 5" (127mm)
Proper air circulation will help your freezer work at maximum efficiency.

NOTE: The appliance must be correctly connected to the power supply.

CAUTION

Care should be taken during the handling moving and use of the freezer to avoid damaging the refrigerant tubing or increasing the risk of a leak.

WARNING

It is important to keep the power cord away from the compressor at the back of the freezer as during operation, the compressor can reach a high temperature and could cause serious damage to the power cord.

SET UP & USE

PROTECTION FROM HEAT AND MOISTURE

- Do not install your freezer in any location where heavy moisture is present or if the location is not properly insulated. This freezer is not designed to operate in temperature setting below 55°F.
- Location for the freezer should be on a hard surface and away from direct sunlight and heat source, e.g., radiators, baseboard heaters, cooking appliances, etc

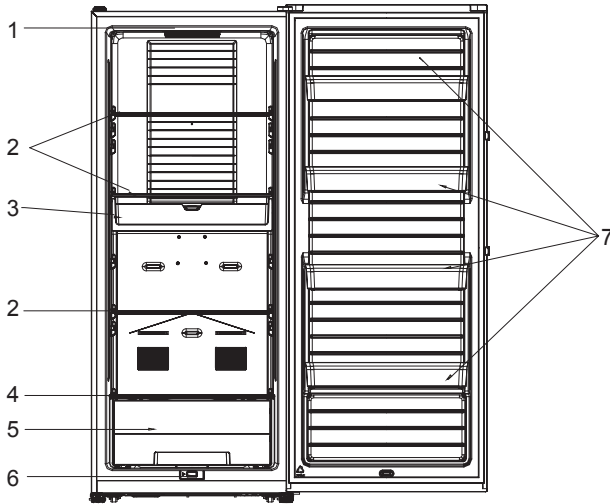
STARTING YOUR CONVERTIBLE FREEZER/REFRIGERATOR

1. After cleaning your freezer thoroughly, wipe the outside with a soft dry cloth, the interior with a clean moist cloth.
2. Insert the power supply cord into the electrical outlet.

NOTE: As the door gets pressed in during shipping, the gasket may have to be reset. This is done to prevent the cool refrigerated air from escaping. If there is a gap between the door gasket and the cabinet, set the gasket by gently pulling it out of the seal gap.

SET UP & USE

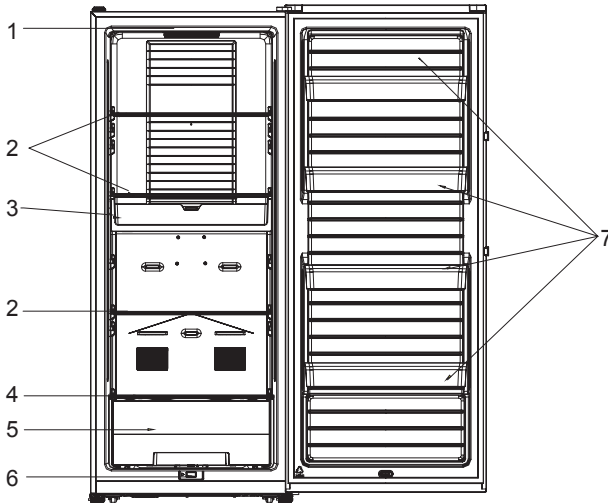
FEATURES FOR CCUC1100G



1. Control Display
2. Glass Shelves
3. Freezing tray
4. Crisper Cover
5. Drawer
6. Switch
7. Door Bins

SET UP & USE

FEATURES FOR CCUC1640G



1. Control Display
2. Glass Shelves
3. Freezing tray
4. Crisper Cover
5. Drawer
6. Switch
7. Door Bins

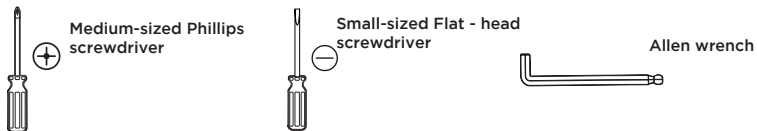
SET UP & USE

REVERSING THE DOOR

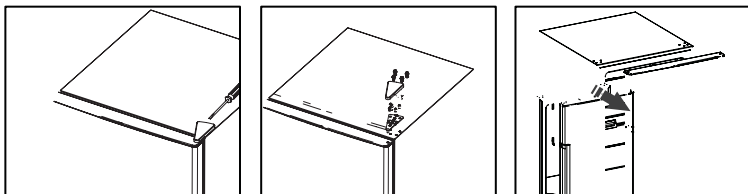
You can choose to open your refrigerator by the right side or the left side. To change the way of opening, please follow the instructions below.

Important safety warning: before doing so please unplug and disconnect the appliance

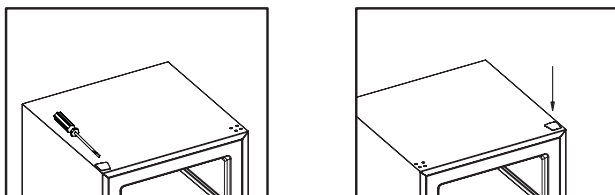
In addition to the accessories packed, you will need:



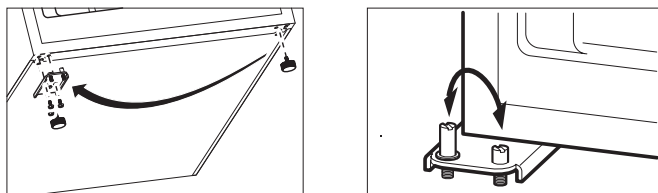
1. First, check to make sure the power is disconnected.



2. Remove the protective covers with a Flat-head screwdriver through the back side, and save the protective covers.
3. Remove the 4 shelf-tapping screws, and save them.
4. Push the top hinge forward, remove the door and save it aside.

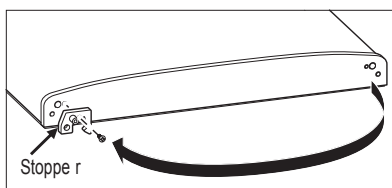


5. Pry off and remove the cover over the screw holes on the left side of refrigerator housing. Attach cover on the right side. Cover is force-fitted.

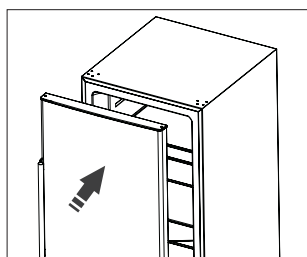


SET UP & USE

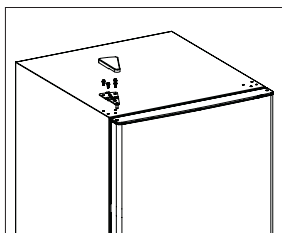
6. Push the appliance slightly backward against the wall.
7. Disassemble the 2 fixed stands.
8. Disassemble the bottom hinge.
9. Assemble the bottom hinge on the other side of the machine.
10. Assemble the stands.
11. Exchange the 2 bolts and affix them on the other side.



12. Exchange the stopper to other side.

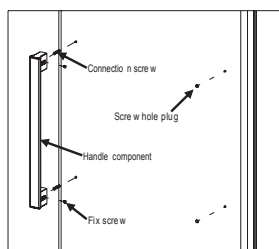


13. Reinstall the door.

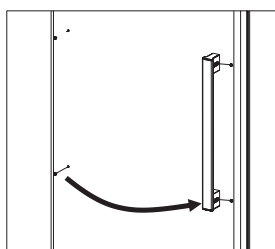


14. Assemble the top hinge with self-tapping screws and the protective cover

REVERSING THE HANDLE (model CCUC1110G only)



1. Use allen wrench to loosen the fix screw and take out the handle component.
2. Twist out connection screw
3. Use thin rigid card material to lift up screw hole plug and take it out.



4. Install the handle component on the right side using the screws.
5. Insert screw hole plug into the left screw hole.

SET UP & USE

OPERATION INSTRUCTIONS

1. Leave some space between items inside for air circulation.
2. Food should be kept in sealed package to prevent drying or odor
3. Hot food should be cooled down before placing into the appliance.
Otherwise, interior temperature and electronic consumption will increase.
4. Reducing the frequency of door opening can lower the electronic consumption.

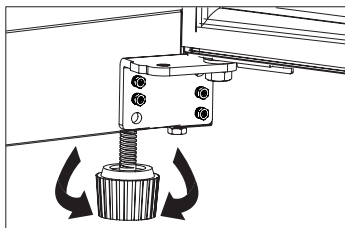


Warning | Do not use any electronic equipment inside the appliance.

LEVELING INSTRUCTIONS

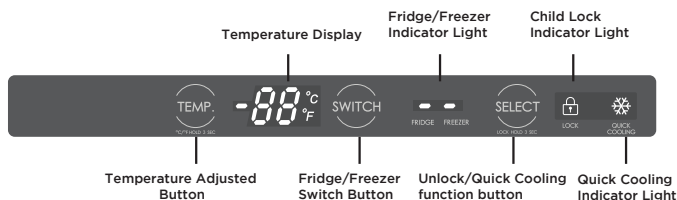
There are two adjustable legs on the bottom of the appliance that can be turned up or down to ensure that the appliance is level.

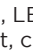



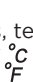





1. Turn the leveling leg counter-clockwise as far as it will go, until the top of the foot is touching the bottom of the chassis.
2. Slowly turn the leveling leg clockwise until the appliance is level.



SET UP & USE

INSTRUCTION FOR USAGE



- When the door is opened, LED display will be lit. Press “” for 3 seconds, the light of “” will be out, child lock unlocks. After the child lock is unlocked, temperature can be adjusted and the mode can be switched; After inactivity of more than 10 seconds, “” light will be turned on, the child lock will be activated again;
- With child lock off, Press “” for 3 seconds, temperature display unit can be switched to Celsius or Fahrenheit, light of “” will turn on.
- With child lock off, temperature can be adjusted by pressing “”. In the freezer mode, temperature adjusted ranges are from -22°C to -15°C (-8°F to 5°F); In the fridge mode, temperature adjusted ranges are from 1°C to 7°C (33°F to 45°F).
- With child lock off, fridge mode or freezer mode can be switched by pressing “”; when FRIDGE, the indicator light is on, fridge mode is selected, when FREEZER, the indicator light is on, freezer mode is selected.
- With child lock off, quick cooling function is applied when “” is pressed, Quick Cooling function indicator light “” will be on; Press “” again, quick cooling mode can be exited manually.

Note:

- As for the Quick Cooling function can be only selected in the freezer mode and it can not be selected in the fridge mode.
- In the Quick Cooling mode, the inner temperature can reach as low as -30°C(-22°F); Quick Cooling mode will be exited automatically when it is on for 24 hours continuously.

SET UP & USE

MAINTENANCE

The appliance should be maintained and cleaned frequently. For your safety, please pull the plug out of the socket before cleaning.

1. Interior maintenance

Clean the interior of the appliance with clean water or neutral detergent. Scour it with clean water and wipe it with a piece of dry cloth.

2. Maintenance of door gasket

It is easy to get damaged if the door gaskets are soiled by things like oil, sauce and etc., so clean it with care.

3. Outer maintenance

Wipe the dust with a piece of dry cloth, clean it with neutral detergent as necessary.

4. Lighting and its replacement

When the refrigerating chamber door opens, the LED light turns on.

When the light is damaged, please remove the lampshade first and then replace the LED light.

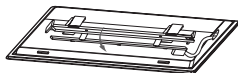
The specific operations are shown in the following diagram:



1. Please move the lampshade and the thermostat 3-5mm in the direction of the arrow.



2. Take out the lampshade and thermostat downwards.



3. Pull the connection terminal, using the screwdriver to remove the LED light board and replace it.

⚠ Note: If the LED lamp is abnormal, it should be replaced by professionals. Do not dismantle and replace it in order to avoid damage.

Contact customer service for further information regarding a replacement LED light for this appliance.

CLEANING AND CARE

CLEANING AND MAINTAINING

The freezer should be cleaned and maintained once a month. Before doing so, you must unplug the freezer.

VACATION AND MOVING CARE

- When going on vacation, it is best that you empty all the food from your freezer. Unplug the freezer. Clean the unit as per "Cleaning Method" and leave the door open to remove any odors. .
- When travelling or moving the freezer, always transport the unit vertically. Moving the unit on its sides may damage the freezer and/or its compressor.

⚠ CAUTION

To avoid personal injury or product damage always read and follow manufacturer's instructions and warnings before using any cleaning products.

⚠ WARNING

Always unplug your freezer before cleaning to avoid electric shock. Ignoring this warning may result in death or injury

POWER INTERRUPTION

In case of a power interruption/outage, unplug the power cord from the wall outlet. Replug the power cord to the wall outlet once the power has been restored. For long period of power outage, inspect and discard the spoiled or thawed foods from the freezer and freezer compartments. Clean the freezer thoroughly before using again.

CLEANING METHOD

Prepare a cleaning solution of 3-4 tablespoons of baking soda mixed with warm water. Use sponge or soft cloth, dampened with the cleaning solution to wipe down your freezer.

- Rinse with clean warm water and dry with a soft cloth,
- Do not use harsh chemicals, abrasives, ammonia, chlorine bleach, concentrated detergents, solvents or metal scouring pads. Some of these chemicals may dissolve, damage and/or discolor your freezer.

DOOR GASKET

Clean door gaskets every three months according to general instructions. Gasket must be kept clean and pliable to assure a proper seal.

- Petroleum jelly applied lightly on the hinge sides of gaskets will keep the gasket pliable and ensure a good seal.

DISPOSAL

This appliance may not be treated as regular household waste, it should be taken to the appropriate waste collection point for recycling of electrical components. For information on local waste collection points, contact your local waste removal agency or government office.

DEFROST

Defrosting of refrigerator will be executed automatically while the product is operating, so it is not required for manual defrost. The defrost water flows into the vaporization plate and will be vaporized by the heat of compressor. so its drain tube must be cleaned.

⚠ WARNING

Do not use mechanical devices or other means to accelerate the defrosting process, other than those recommended by the manufacturer

CLEANING AND CARE

ENERGY SAVING TIPS

- The freezer should be located in the coolest area of the room, away from heat-producing appliances or heating ducts, and out of direct sunlight.
- Let hot foods cool to room temperature before placing in the freezer. Overloading the freezer forces the compressor to run longer and thus increase energy consumption. Foods that refrigerate too slowly may lose quality or spoil.
- Be sure to wrap foods properly, and wipe containers dry before placing in the freezer.
- The shelves should not be lined with aluminium foil, wax paper, or paper towels. This will interfere with cold air circulation, making the freezer less efficient.
- Organize food to reduce door openings and extended searches. Remove as many items as needed at one time, and close the door as soon as possible.

 **WARNING:** DO NOT TRY TO REPAIR THE FREEZER YOURSELF.

TROUBLESHOOTING & WARRANTY

BEFORE YOU CALL FOR SERVICE

IF THE FREEZER FAILS TO OPERATE:

- A) Check to make sure that the freezer is plugged in securely. If it is not, remove the plug from the outlet, wait 10 seconds and plug it in again securely.
- B) Check for a blown circuit fuse or a tripped main circuit breaker. If these seem to be operating properly, test the outlet with another appliance.

IF NONE OF THE ABOVE SOLVES THE PROBLEM, CONTACT A QUALIFIED TECHNICIAN. DO NOT TRY TO ADJUST OR REPAIR THE FREEZER YOURSELF.

CUSTOMER SERVICE

IMPORTANT

DO NOT RETURN THIS PRODUCT TO THE STORE

If you have a problem with this product, please contact the Customer Satisfaction Center at 844-299-0879 or service@appliance.com.

**DATED PROOF OF PURCHASE, MODEL # AND SERIAL #
REQUIRED FOR WARRANTY SERVICE**

TROUBLESHOOTING & WARRANTY

TROUBLESHOOTING

Troubleshoot your problem by using the chart below. If the freezer still does not work properly, contact customer service center or the nearest authorized service center. Customers must never troubleshoot internal components.

TROUBLE	POSSIBLE CAUSE	POSSIBLE REMEDY
Appliance does not work.	<ul style="list-style-type: none"> A. Unit is not plugged in or is loose. B. Fuse has blown or is defective. C. Wall power socket is defective. 	<ul style="list-style-type: none"> A. Plug in the appliance B. Check fuse, replace if necessary. C. To be corrected by a qualified electrician.
The food is too warm.	<ul style="list-style-type: none"> A. Temperature is not properly adjusted. B. Door was open for an extended period. C. A large quantity of warm food was placed in the freezer within the last 24 hours. D. The appliance is near a heat source. 	<ul style="list-style-type: none"> A. Set the temperature control dial to a cooler setting. B. Open the door only as long as necessary. Check door gasket for proper seal. C. Set the temperature control dial to a colder setting temporarily. D. Please look in the "Protection From Heat and Moisture" section.
Heavy build-up of frost. NOTE: This is normal during high humidity periods. Frequent door openings will also cause heavy frost buildup.	<ul style="list-style-type: none"> A. Door seal seal is not air-tight. 	<ul style="list-style-type: none"> A. Carefully warm the leaking sections of the door gasket with a hair dryer (on a cool setting). At the same time, shape the warmed door seal by hand such that it sits correctly.
Popping or cracking sounds.	<ul style="list-style-type: none"> A. When compressor comes on. 	<ul style="list-style-type: none"> A. This is a normal sound of coolant flowing through condenser coils.
Appliance door does not shut properly.	<ul style="list-style-type: none"> A. Possible blockage from food containers or shelves. 	<ul style="list-style-type: none"> A. Ensure nothing is blocking the door.
Appliance has an odor.	<ul style="list-style-type: none"> A. Foods not properly sealed. B. Interior needs cleaning. 	<ul style="list-style-type: none"> A. Remove any contaminated foods. B. Please refer to "Cleaning and Care" section.

LIMITED WARRANTY

ACTIVATE WARRANTY

Any repair, replacement, or warranty service, and all questions about this product should be directed to W Appliance Co. at 844-299-0879 from the US, including Puerto Rico, or Canada.

Some issues can be addressed without service. Before contacting regarding your warranty, please visit the "Troubleshooting" section of your user manual.

All warranty service is provided exclusively by our authorized W Appliance Co. service providers. For service in US, including Puerto Rico, and Canada call 1-844-299-0879 to create a ticket. When calling, please have the following information available: date of purchase, model number, proof of purchase and a brief description of the problem.



WHAT IS COVERED

YOUR SOLE AND EXCLUSIVE REMEDY UNDER THIS LIMITED WARRANTY SHALL BE PRODUCT REPAIR AS PROVIDED HEREIN. This limited warranty is valid only in the United States or Canada and applies only when the major appliance is used in the country in which it was purchased:

ONE (1) YEAR FROM THE DATE OF DELIVERY OF THE ORIGINAL PURCHASE (PARTS AND LABOR INCLUDED):

W Appliance Co. will pay for factory-specified replacement parts and labor to correct defects in materials or workmanship that existed when this major appliance was purchased, or at its sole discretion, replace the product with a new, or remanufactured, unit equivalent to your original purchase. In the event of product replacement, your appliance will be warranted for the remaining term of the original unit's warranty period.

YEARS TWO (2) THROUGH FIVE (5) FROM DATE OF DELIVERY OF THE ORIGINAL PURCHASE (CERTAIN COMPONENT PARTS ONLY - LABOR NOT INCLUDED): W Appliance Co. will pay for factory-specified replacement parts for the component parts listed below to correct non-cosmetic defects in materials or workmanship in these parts that prevent function of this major appliance and that existed when this major appliance was purchased:

DISHWASHER	WASHING MACHINE	DRYER	REFRIGERATORS AND FREEZERS	MICROWAVE
Lower, Upper and Third Level (where applicable) Wire Racks (excludes cup shelves, silverware basket, and third rack trays), Chopper Blade, Stainless Steel Tub and Inner Door Liner	Drive Motor (Stator and Rotor Only)	Drive Motor Only	Compressor Only	Magnetron Tube Only

LIMITED WARRANTY

WHAT IS NOT COVERED / EXCLUSIONS

1. Commercial, non-residential or multiple family use or use inconsistent with the product instructions and manuals.
2. In-home instruction on how to use your product.
3. Repair to correct improper maintenance, installation not in accordance with installation instructions or electrical or plumbing codes, or repair of household electrical or plumbing systems.
4. Consumable parts (e.g., light bulbs, batteries, air or water filters, preservation solutions, etc.).
5. Defects or damage resulting from accident, misuse, abuse, alteration, fire, floods, acts of God or improper installation.
6. Damages, defects, or repairs caused by unauthorized servicers or use of non-genuine or third-party parts.
7. Any damage to the finish of appliance or home incurred during installation, including but not limited to floors, cabinets, walls, etc.
8. Cosmetic damage (e.g., scratches, dents, chips, and other damage to appliance finishes), unless such damage results from defects in materials and workmanship and is reported to W Appliance Co., within 48 hours from date of delivery.
9. If the appearance or exterior of the product has been damaged or defaced, altered or modified in design or construction.
10. Discoloration, rust or oxidation of surfaces resulting from caustic or corrosive environments (e.g., high salt concentrations, high moisture or humidity or exposure to chemicals).
11. Product pick-up or delivery. This warranty is for in-home repair only.
12. Travel or transportation expenses for service in remote locations where an authorized servicer is not available.
13. Products not accessible to provide required service or for expenses making the product accessible for servicing.
14. Surcharges including but not limited to, any after hour, weekend, or holiday service calls, tolls, ferry trip charges, or mileage expenses for service calls to remote areas, including the state of Alaska.
15. Repair, removal or reinstallation of inaccessible appliances or built-in fixtures (e.g., trim, decorative panels, flooring, cabinetry, islands, countertops, drywall) that interfere with servicing, removal or replacement of the product.
16. Appliances with original, factory installed model/serial numbers removed, altered or not easily determined.
17. Incidental or consequential damages (e.g., loss of food or medicine) resulting from appliance breakdown or delay in service, repair or replacement.
18. Transportation and shipping costs associated with the replacement of the unit.
19. Glass parts and other accessory items included with the unit.
20. Products that have been purchased as refurbished, like new, second-hand, under "as is" or "final sale" terms.
21. Units that have been transferred from the original owner/purchaser.
22. If there is damage due to power line surge, user damage to the AC power cord or connection to improper voltage source.
23. Products which are not defective or broken, or which are working as described in the owner's manual.

DISCLAIMER OF IMPLIED WARRANTIES

Repair or replacement as provided under this warranty is the exclusive remedy to the customer. W Appliance Co. shall not be liable for any incidental or consequential damages for breach of any express or implied warranty on this product, except to the extent prohibited by applicable law. Any implied warranties, including any implied warranty of merchantability or implied warranty of fitness for a particular purpose, are limited to the duration of this warranty or the shortest period allowed by law. Some states do not allow the exclusion or limitations of consequential damages, or limitations on how long the warranty lasts. In these cases, the above exclusions or limitations may not apply to you. This warranty gives you specific legal rights and you may also have other rights which may vary from state to state.

W Appliance Co. does not warrant that the appliance will work properly in all environmental conditions and makes no warranty and representation, either implied or expressed, with respect to the quality, performance, merchantability, or fitness for a particular purpose other than the purpose identified within this user's manual. W Appliance Co. has made every effort to ensure that this user's manual is accurate and disclaims liability for any inaccuracies or omissions that may have occurred. Information in this user's manual is subject to change without notice and does not represent a commitment on the part of W Appliance Co. W Appliance Co. reserves the right to make improvements to this user's manual and/or to the product described at any time without notice. If you find information in this manual that is incorrect, misleading or incomplete, please call 844-299-0879.

W Appliance Co.
New York, NY 10018

EXTENDED WARRANTY COVERAGE

Protect Your Appliance with Extended Warranty Coverage

Thank you for purchasing your new appliance! Your product comes with our one-year limited warranty, but why stop there? With our Extended Warranty and Accidental Damage Protection Plan, provided by Mulberry, you can ensure your appliances are covered for longer—without worrying about unexpected breakdowns or accidents.

Why Upgrade to the Extended Warranty Plan?

- **Comprehensive Protection** – Extend your warranty coverage and get full protection for accidental damage and mechanical/ electrical failures, giving you peace of mind well beyond the first year.
- **No Hidden Costs** – You won't pay any deductibles or service fees for repairs or replacements. We've got you covered!
- **Avoid Expensive Repairs** – Appliances like refrigerators, air conditioners, and dishwashers can be costly to repair. Keep your products running smoothly without the worry of unexpected repair bills.
- **Quick & Easy Claims** – Mulberry offers hassle-free claims and quick, reliable service when you need it most—no complicated paperwork, just fast and efficient help.



Coverage	Basic Warranty	Protection +
Mechanical / Electrical Failure Coverage	Yes (1 year)	Yes (2 - 4 years)
Service Fee or Deductible	Yes (may apply)	No
Parts & Labor Costs Covered	Yes (limited to 1 year)	Yes (2 - 4 years)
Hassle-Free Claims Process	Standard	Priority (faster service)
Repair / Replacement Options	Yes (limited to 1 year)	Yes (2 - 4 years)
Convenience & Peace of Mind	Limited to 1 year	Guaranteed for up to 4 years



©2024 Commercial Cool is a W Appliance Company.
All Rights Reserved.

